

# compressor valves



radiused disc  
Hi-Flo™  
poppet  
ring type  
ported plate  
unloaders  
actuators  
reconditioning  
replacement parts  
Valvealert™



**COMPRESSOR PRODUCTS**  
International

an EnPro Industries company

DEPENDABLE  
QUALITY  
EXPERIENCED  
EXPERTISE

# compressor valves

**CPI Hi-Flo™ valve** is a ring type design based on the proven advantages of an aerodynamic V shape. The ring shape and the profiled seat enable the Hi-Flo™ to perform well in a wide range of applications, delivering improved valve running life, especially in extreme, dirty and robust operating conditions.

**CPI radiused disc valve** design has improved reliability in a wide range of compressor applications worldwide; with the capability of operating across a range of parameters, reaching temperatures of up to and in excess of 200°C/390°F, pressures in excess of 400 bar/6000 psi; and are suitable for sour gas applications.

**CPI poppet valves** are designed and engineered specifically for each application, CPI poppet valves are available in single deck and double deck configurations.

**CPI valves - unloaders and actuators** can be supplied with finger and plug type suction valve unloaders. These are complemented by a range of pneumatic valve unloader actuators, designed specifically for each compressor application.

**valve reconditioning and replacement parts** - valves are reconditioned at a number of facilities around the world. Also available is the capability to supply replacement parts to operators easily, quickly and economically.

radiused disc

Hi-Flo™

poppet

ring type

ported plate

unloaders

actuators

reconditioning

replacement parts

Valvealert™





# compressor valves - the heart

It is widely acknowledged that the compressor valve is the heart of any compressor; the efficient operation of this most critical part of a piston compressor is key to its overall availability. Valve problems are reportedly the primary reason for reciprocating compressor shutdowns, which in many cases can be attributed to design, improper reconditioning or operating factors.

The CPI range of compressor valves are designed to meet the full range of application requirements. These designs include concentric ring, dampened disc, ported plate, poppet and channel type. All CPI suction valves with center studs can be manufactured to connect with an IPV indicator part system. CPI valves can also be fitted with a range of plug and finger type unloading systems and actuators.

CPI valves are designed, manufactured and reconditioned at a number of CPI facilities strategically located around the world. Stocks of spare parts including seats, guards and internal components are also held at these locations, providing total customer support for local markets 24/7, all year round.

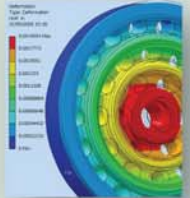
## CPI valve design

CPI compression engineers utilize sophisticated proprietary valve dynamics programs to carry out valve performance modelling and analysis of existing operations, in order accurately to select the optimum valve design solution for each specific application.

This is combined with R&D programs that are focused on all aspects of valve design detail, reliability, efficiency, ease of installation and maintenance.

## quality manufacturing

CPI's valve manufacturing process has total control of components and materials with in-house blending and molding facilities to produce its unique range of plastic valve plate and ring materials. This, together with the CPI global network of strategic facilities and service centers, provides compressor operators with a responsive and effective supply of new and reconditioned valves; when it matters, where it matters, worldwide.



radiused disc  
Hi-Flo™  
poppet  
ring type  
ported plate  
unloaders  
actuators  
reconditioning  
replacement parts  
Valvealert™

CPI's unique approach in developing new compressor valve concepts and non-metallic materials used in the production of valve plates, piston rings, rider rings, packings and oil wipers, together with our application expertise, has transformed the performance and reliability of reciprocating compressors for many operators in a wide range of applications around the world. Further information about CPI's specialized products, general product range and services can be accessed via our website at [www.c-p-i.com](http://www.c-p-i.com)



DEPENDABLE  
QUALITY  
EXPERIENCED  
EXPERTISE



**COMPRESSOR PRODUCTS**  
International

an EnPro Industries company

Worldwide Headquarters and manufacturing - Americas

4410 Greenbriar Drive, Stafford, TX 77477, USA

Tel: +1 281 207 4600 or 800 675 6646 Fax: +1 281 207 4612

Headquarters - Europe, Middle East, Africa and Asia Pacific

Smitham Bridge Road, Hungerford, Berkshire RG17 0QP, UK

Tel: +44 (0)1488 684585 Fax: +44 (0)1488 684001

[www.c-p-i.com](http://www.c-p-i.com)

email: [info@c-p-i.com](mailto:info@c-p-i.com)